



US SERIES

Universal Sewer Valves

Universal Sewer Valves

Model Information

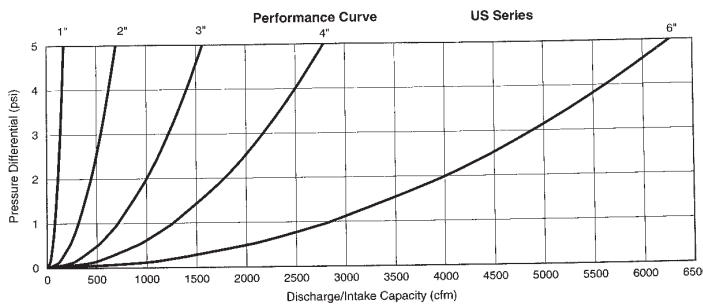
Inlet Size	2"	2"	3"	4"	6"
Outlet Size	1"	2"	3"	4"	6"
Screwed Inlet	USL20	US20	US30	US40	
	USL10S	US20S			
Screwed Inlet w/Backflush	US10SB	US20SB	US30B	US40B	
	USL20B	US20B	US30B	US40B	
125lb Flange		US21	US31	US41	US61
125lb Flange w/Backflush		US21B	US31B	US41B	US61B

Available Orifice Sizes

Max. Op. Pressure	USL20 US10S	US20 US20S	US30	US40	US61
150 psi	3/16"	1/4"	1/4"	1/4"	1/4"
300 psi	3/32"	1/8"	1/8"	1/8"	1/8"

Discharge in SCFM

Op. Pres. PSIG	Orifice Size in Inches		
	1/8"	3/16"	1/4"
150	24.4	54.6	98
300	46.7	105	187



The Air and Vacuum orifice and Pressure Air Release orifice close simultaneously after the pump starts and liquid enters the valve body. The small orifice opens to continuously release accumulating air as it collects in the valve body. The large Air and Vacuum orifice will only open again when a vacuum occurs upon pump shut down.

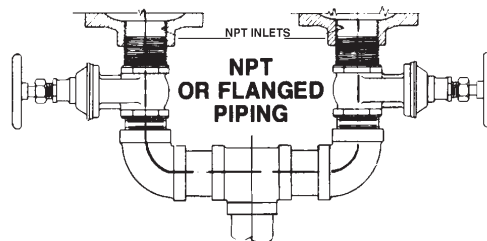


Combination (Dual) Sewer Valves

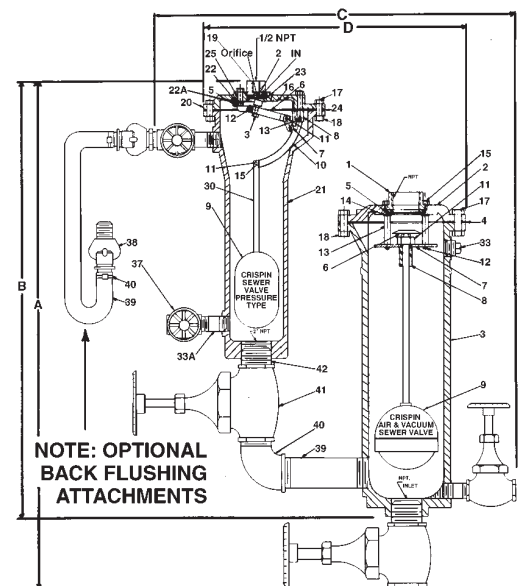
Combination Dimensions

MODEL	SIZE	INLET	A	B	C	D
SL20A/SL20	2"	Yoke Arrang.	28 3/4"	25"	26 1/4"	23"
S20A/SL20	2"	Screw	35 1/4"	27 3/4"	24 3/4"	19 3/4"
S21A/SL20	2"	125 lb. Flng.	42 3/4"	31 3/4"	24 3/4"	19 3/4"
S30A/SL20	3"	Screwed	37"	27 3/4"	25 3/4"	20 3/4"
S31A/SL20	3"	125 lb. Flng.	39 1/2"	27 3/4"	25 3/4"	20 3/4"
S40A/SL20	4"	Screwed	39"	29 3/4"	27 3/4"	22 3/4"
S41A/SL20	4"	125 lb. Flng.	42 1/4"	29 3/4"	27 3/4"	22 3/4"
S61A/SL20	6"	125 lb. Flng.	45 1/4"	31 1/4"	30 1/4"	25 1/2"
S81A/SL20	8"	125 lb. Flng.	45"	29 3/4"	31 3/4"	27 1/2"

Optional Yoke Arrangement



Standard Combination Sewer Valve Arrangement



• Please note that dimensions include backflush attachments

S/SL SERIES



SUBMITTAL SHEET FOR S/SL SERIES

Submittal Sheet for Crispin S/SL Series

2" Dual Sewer Valve (stan.)

Manufactured in compliance with ANSI/AWWA C512

Date: October, 2001

Parts List

ITEM	DESCRIPTION	MATERIAL	ASTM
1	TOP	CAST IRON	A126 CL.B
2	FLANGE	CAST IRON	AI 26 CL.B
3	BODY	CAST IRON	A126 CL.B
4	GASKET	ARMSTRONG N-8092	N/A
5	SEAT	BUNA-N RUBBER	D2000
6	VALVE & FLOAT ROD	STAINLESS STEEL	A582
7	GUIDE ROD STAND	STAINLESS STEEL	A240
8	FLOAT ROD GUIDE	NYLATRON	N/A
9	FLOAT	STAINLESS STEEL	A240
11	GUIDE ROD NUT	STAINLESS STEEL	A194
12	STAND ROD SCREW	STAINLESS STEEL	A193
13	STAND ROD	STAINLESS STEEL	A582
14	STAND ROD GASKET	FIBER	NvA
17	BOLT	STEEL	A307
18	NUT	STEEL	A563
*40	FLUSH PLUG	CAST IRON	A126 CL.B
50	INTERFERENCE PIN	STAINLESS STEEL	A193

Pressure Air Release Sewer Valve

*1N	SEAT	PVC	1784
*1P	SEAT	STAINLESS STEEL	A582
2	VALVE PLUNGER	BUNA-N RUBBER	D2000
3	NUT	STAINLESS STEEL	A194
3W	LOCKWASHER	STAINLESS STEEL	A240
5	VALVE FULCRUM	STAINLESS STEEL	A582
6	VALVE LEVER	STAINLESS STEEL	A240
7	LINK	STAINLESS STEEL	A240
8	BALL FULCRUM	STAINLESS STEEL	A582
9	BALL FLOAT	STAINLESS STEEL	A240
10	BALL LEVER	STAINLESS STEEL	A240
11	BEARING PIN	STAINLESS STEEL	A582
12	BEARING PIN	STAINLESS STEEL	A582
13	BEARING PIN	STAINLESS STEEL	A582
15	COTTER PIN	STAINLESS STEEL	A313
17	BOLT	STEEL	A307
18	NUT	STEEL	A563
9	TOP	CAST IRON	A126 CL.B
20	FLANGE	CAST IRON	A126 CL.B
21	BODY	CAST IRON	A126 CL.B
22	FULCRUM WASHER	FIBER	N/A
22A	FULCRUM WASHER	FIBER	N/A
23	SEAT GASKET	BUNA-N RUBBER	D2000
24	FLANGE GASKET	ARMSTRONG N-8092	N/A
25	BOLT	STAINLESS STEEL	A193
30	FLOAT ROD	STAINLESS STEEL	A582
*40	FLUSH PLUG	CAST IRON	A196 CL.B

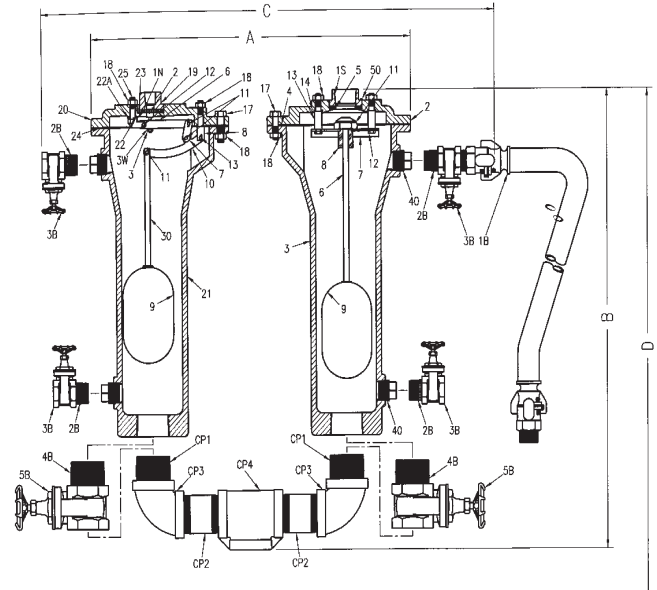
Optional Back Flush Components

*1B	HOSE ASSEMBLY	RUBBER, CAD. PLT. STEEL	N/A
*2B	1" x CL. NIPPLE	STEEL	A53
*3B	1" GATE VALVE	BRASS	N/A
*4B	2" x CL. NIPPLE	STEEL	A53
*5B	9" GATE VALVE	BRASS	N/A

Connecting Parts

CP1	2" x CL. NIPPLE	STEEL	A53
CP2	2" x 3.500" NIPPLE	STEEL	A53
CP3	2" - 90° ELBOW	MALLEABLE IRON	A338
CP4	2" x 2" x 2" TEE	MALLEABLE IRON	A338

DIAMETER	MAX. PRESSURE	DISCHARGE RATE
1/4	150 PSIG	98 SCFM
1/8	300 PSIG	46.7 SCFM



Specifications

The Combination (dual) Sewer Valves shall be installed at high points in the system or at points selected by the engineer. This will permit discharging the surge of air from an empty line when filling and relieve the vacuum when draining or under a negative pressure, and also to release an accumulation of air and gases when the system is under pressure.

The valve shall be Crispin Model _____ Combination Sewer Valves as manufactured by Crispin-Multiplex Manufacturing Co., Berwick, Pa.

(To specify each valve of the combination, refer to the specifications for the Sewer Air and Vacuum and Pressure Sewer Valves).

The valves in combination shall be joined by piping the pressure sewer valve out of the side of the Air and Vacuum Sewer Valve.

Option: A protectop shall be supplied to prevent debris from entering the outlet of the valve.

Option: (Where pressures are greater than 300 psig).

The valve(s) shall be ANSI Class (125,250) flanged inlet connection and shall have a (steel, stainless steel, or ductile iron) body, top and inlet flange.

Option: The valves in the combination shall be joined together by a "Y" or "yoke" section.

Note: When combination valves are specified with backflushing attachments, only one backflushing hose per combination will be supplied.

Standard operating pressure for Crispin Air Valves is 20 to 150 PSIG. Please check one of the following if your operating needs differ:
 _____ 2 to 40 PSIG _____ 151 to 300 PSIG

Size Specifications

MODEL	INLET SIZE	OUTLET SIZE	A	B	C	D	WEIGHT
SL20A/SL20	2" NPT	1" NPT	23.00	25.00			110
SL20AB/S20B	2" NPT	1" NPT			26.25	28.75	130

* Parts are interchangeable & optional at customer's request

Submittal Sheet for Crispin S/SL Series

3-10" Dual Sewer Valve (high) (1 of 2)

Manufactured in compliance with ANSI/AWWA C512

Date: October, 2001



SUBMITTAL SHEET FOR S/SL SERIES

Specifications

The Combination (dual) Sewer Valves shall be installed at high points in the system or at points selected by the engineer. This will permit discharging the surge of air from an empty line when filling and relieve the vacuum when draining or under a negative pressure, and also to release an accumulation of air and gases when the system is under pressure.

The valve shall be Crispin Model _____ Combination Sewer Valves as manufactured by Crispin-Multiplex Manufacturing Co., Berwick, Pa.

(To specify each valve of the combination, refer to the specifications for the Sewer Air and Vacuum and Pressure Sewer Valves).

The valves in combination shall be joined by piping the pressure sewer valve out of the side of the Air and Vacuum Sewer Valve.

Option: A protectop shall be supplied to prevent debris from entering the outlet of the valve.

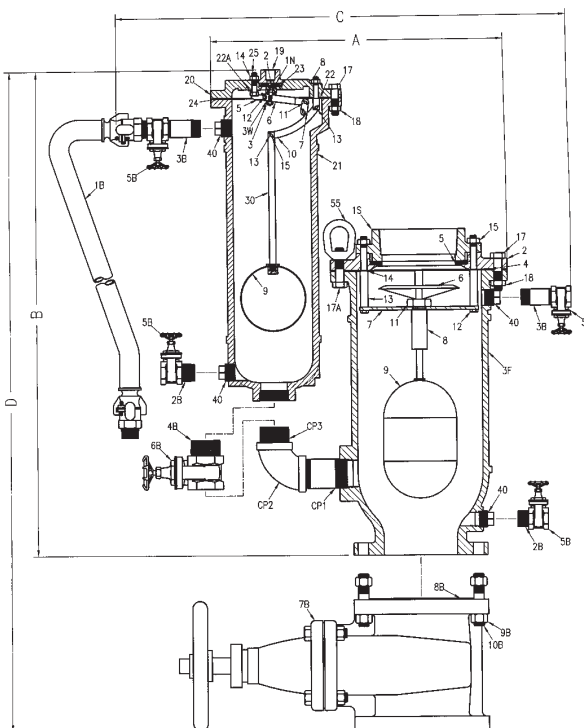
Option: (Where pressures are greater than 300 psig).

The valve(s) shall be ANSI Class (125,250) flanged inlet connection and shall have a (steel, stainless steel, or ductile iron) body, top and inlet flange.

Option : The valves in the combination shall be joined together by a "Y" or "yoke" section.

Note: When combination valves are specified with backflushing attachments, only one backflushing hose per combination will be supplied.

Standard operating pressure for Crispin Air Valves is 20 to 150 PSIG. Please check one of the following if your operating needs differ:
 _____ 2 to 40 PSIG _____ 151 to 300 PSIG



Size Specifications

MODEL	INLET SIZE	OUTLET SIZE	A	B	C	D	WEIGHT
†S30A/S20	3" NPT	3" NPT	20.25	31.50			197
†S30AB/S20B	3" NPT	3" NPT			24.25	41.00	225
†S31A/S20	3" 125# FLG	3" NPT	20.25	31.50			207
†S31AB/S20B	3" 125# FLG	3" NPT			24.25	43.50	270
†S40A/S20	4" NPT	4" NPT	22.25	33.50			218
†S40AB/S20B	4" NPT	4" NPT			26.25	43.50	237
†S41A/S20	4" 125# FLG	4" NPT	22.25	33.50			235
†S41AB/S20B	4" 125# FLG	4" NPT			26.25	46.25	325
S61A/S20	6" 125# FLG	6" NPT	25.25	35.00			308
S61AB/S20B	6" 125# FLG	6" NPT			28.75	49.25	460
S81A/S20	8" 125# FLG	8" NPT	27.25	33.50			433
S81AB/S20B	8" 125# FLG	8" NPT			30.25	49.00	660
S101A/S20	10" 125# FLG	10" NPT	23.00	28.75			600
S101AB/S20B	10" 125# FLG	10" NPT			41.00	51.00	900

Optional Back Flush Components

ITEM	DESCRIPTION	MATERIAL	ASTM
*1B	HOSE ASSEMBLY	RUBBER, CAD. PLT. STEEL	N/A
*2B	NIPPLE	STEEL	A53
*3B	NIPPLE	STEEL	A53
*4B	NIPPLE	STEEL	A53
*5B	GATE VALVE	BRASS	N/A
*6B	GATE VALVE	BRASS	N/A
*7B	GATE VALVE	BRASS	N/A
*8B	GASKET	ARMSTRONG N-8092	N/A
*9B	NUT	STEEL	A563
*10B	THR'D ALL STUD	STEEL	A307
CP1	NIPPLE	STEEL	A53
CP2	ELBOW	MALLEABLE IRON	A338
CP3	NIPPLE	STEEL	A53

Please refer to the next page for a full listing of the standard and connecting parts associated with Combination Dual Air Release Sewer Valves.

† 3" and 4" also available with threaded inlet.

* Parts are interchangeable & optional at customer's request



Submittal Sheet for Crispin S/SL Series

3-10" Dual Sewer Valve (high) (2 of 2)

Manufactured in compliance with ANSI/AWWA C512

Date: October, 2001

Parts List

ITEM	DESCRIPTION	MATERIAL	ASTM
1S	TOP	CAST IRON	A126 CL.B
2	FLANGE	CAST IRON	A126 CL.B
3	BODY	CAST IRON	A126 CL.B
4	GASKET	ARMSTRONG N-8092	N/A
5	SEAT	BUNA-N RUBBER	D2000
6	VALVE & FLOAT ROD	STAINLESS STEEL	A582
7	GUIDE ROD STAND	STAINLESS STEEL	A240
8	FLOAT ROD GUIDE	NYLATRON	D5989
9	FLOAT	STAINLESS STEEL	A240
11	GUIDE ROD NUT	STAINLESS STEEL	A194
12	STAND ROD SCREW	STAINLESS STEEL	A193
13	STAND ROD	STAINLESS STEEL	A582
14	STAND ROD GASKET	FIBER	D710
15	STANDROD NUT	STEEL	A563
17	BOLT	STEEL	A307
17A	BOLT	STEEL	A307
18	NUT	STEEL	A563
19	BOLT (NOT SHOWN)	STEEL	A307
*40	DRAIN PLUG	CAST IRON	A126 CL.B
55	EYENUT	STEEL	A563

Pressure Air Release Sewer Valve

*1N	SEAT	PVC	1754
*1P	SEAT	STAINLESS STEEL	A582
2	VALVE	PLUNGER BUNA-N RUBBER	D2000
3	NUT	STAINLESS STEEL	A194
W	LOCK	WASHER STAINLESS STEEL	A240
5	VALVE FULCRUM	STAINLESS STEEL	A582
6	VALVE LEVER	STAINLESS STEEL	A582
7	LINK	STAINLESS STEEL	A240
8	BALL FULCRUM	STAINLESS STEEL	A582
9	BALL FLOAT	STAINLESS STEEL	A240
10	BALL LEVER	STAINLESS STEEL	A240
11	BEARING PIN	STAINLESS STEEL	A582
12	BEARING PIN	STAINLESS STEEL	A582
13	BEARING PIN	STAINLESS STEEL	A582
14	NUT	STEEL	A563
15	COTTER PIN	STAINLESS STEEL	A493
17	BOLT	STEEL	A307
18	NUT	STEEL	A563
19	TOP	CAST IRON	A126 CL.B
20	FLANGE	CAST IRON	A126 CL.B
21	BODY	CAST IRON	A126 CL.B
22	FULCRUM WASHER	FIBER	D710
22A	FULCRUM WASHER	FIBER	D710
23	SEAT GASKET	BUNA-N RUBBER	D2000
24	FLANGE GASKET	ARMSTRONG N-8092	N/A
25	BOLT	STAINLESS STEEL	A193
30	FLOAT ROD	STAINLESS STEEL	A582
*40	DRAIN PLUG	CAST IRON	A126 CL.B

Connecting Parts

CP1	NIPPLE	STEEL	A53
CP2	ELBOW	MALLEABLE IRON	A338
CP3	NIPPLE	STEEL	A53

Please refer to the previous page for a listing of the optional backflush components available with Combination Dual Air Release Sewer Valves.

* Parts are interchangeable & optional at customer's request